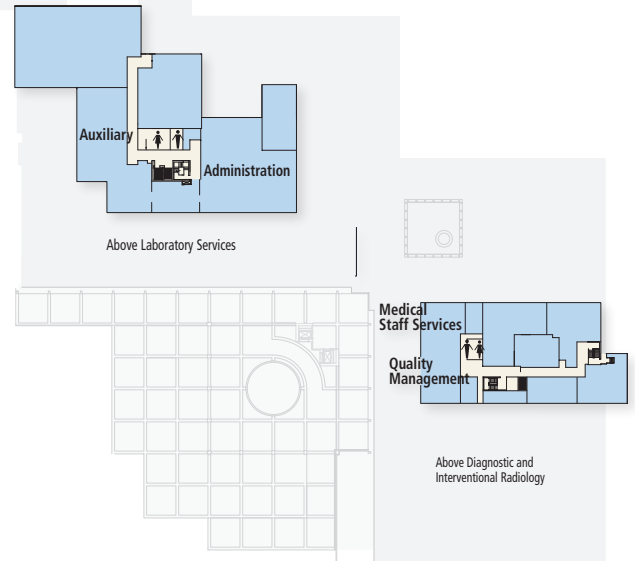
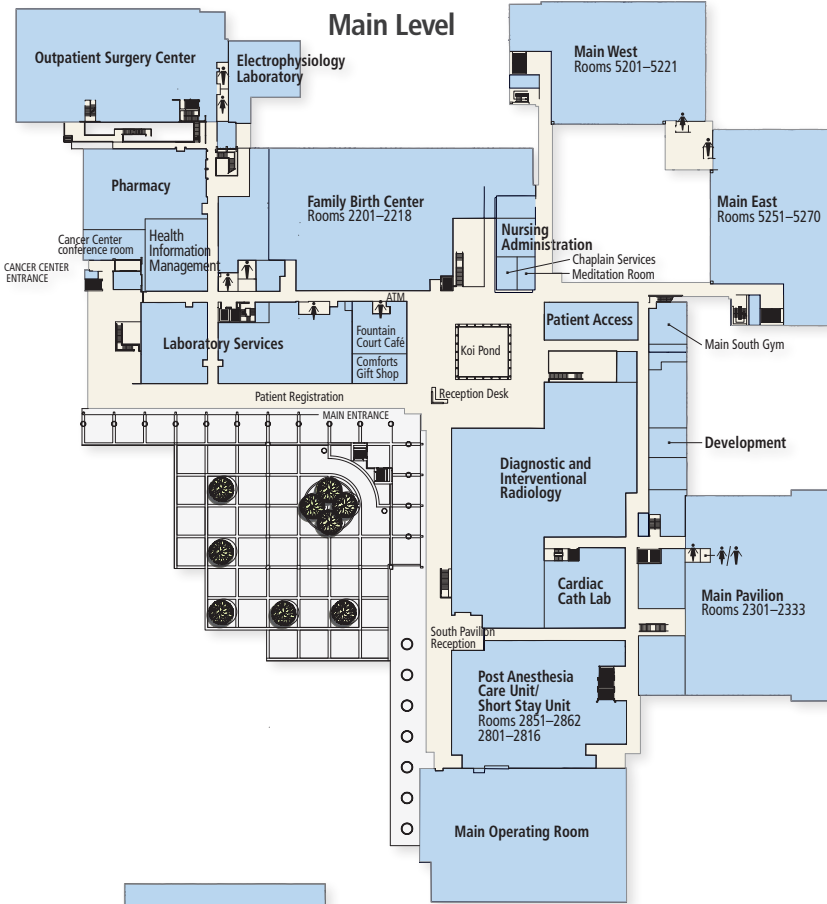
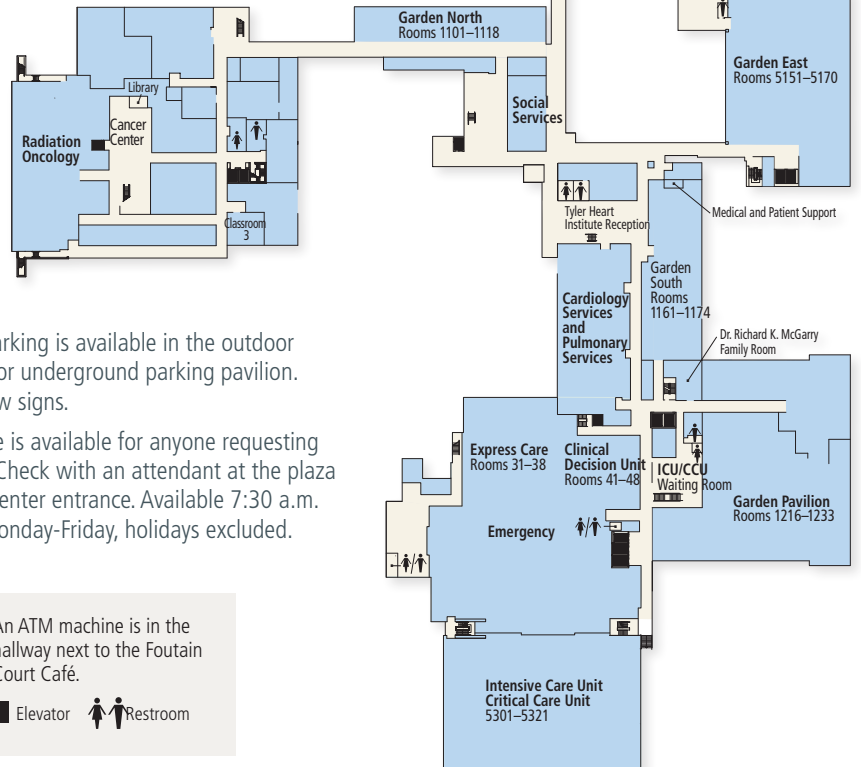


Above Outpatient Surgery Center

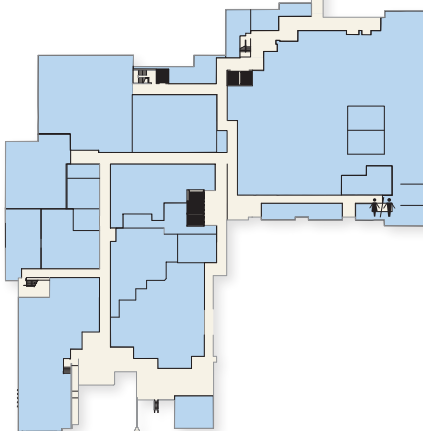
Roof Level
(Above Main Level)



Garden Level
(Below Main Level)



Terrace Level
(Below Garden Level)



Parking. Parking is available in the outdoor parking lot or underground parking pavilion. Please follow signs.

Valet service is available for anyone requesting assistance. Check with an attendant at the plaza or Cancer Center entrance. Available 7:30 a.m. to 6 p.m. Monday-Friday, holidays excluded.

An ATM machine is in the hallway next to the Fountain Court Café.

■ Elevator ♀ Restroom